



MIX IT UP AT MITCHELL'S

This Cincinnati salon shows you how the right cut can create lots of options.

HAIR BY VIVIAN MOORE
FOR MITCHELL'S
SALON & DAY SPA
CINCINNATI, OH
MAKEUP BY LYDIA BROCK
PHOTOS BY ANNETTE MCCALL



☑ SWEPT AWAY

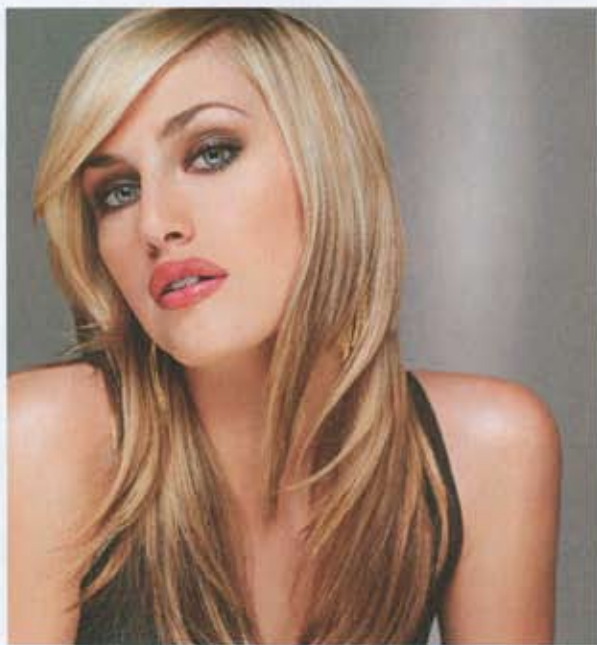
For an opposite approach, leave strands smooth and set just the top with a jumbo-sized rollers. Next, brush hair straight back and pin it in place. To maintain super volume, push the roll forward before pinning.

☑ BEAUTIFUL BLEND

All long hair needs is a few very long layers and it takes on instant life. Add a thermal set and you get movement that lasts. Here, the surface is blown-dry, then hair's iron-curved from mid-shaft to ends.

☑ SHAG-ALICIOUS

Direct ends inward and all those long layers transform into incredible texture. Comb through lightweight mousse, then use a large-diameter brush to direct ends in front inward.



☑ PURE & SIMPLE

Concentrate on adding volume in front of the ears, then tuck longer pieces back. It's also a snap to style—just brush the back straight down, lifting roots up at the crown.

☑ EASY ELONGATION

The newest bob is angled from shorter to longer at the sides. The style exposes your cheekbones with length at the nape framing the face. Round-brush style to play up the shape.



MIX IT UP AT MITCHELL'S



SWING TIME

The obvious flip is so passé. For a swifty style that shows off surface shine, blow-dry completely. Then re-mist ends with water, and wrap just halfway around a round brush. To finish, direct air from underneath, then release.

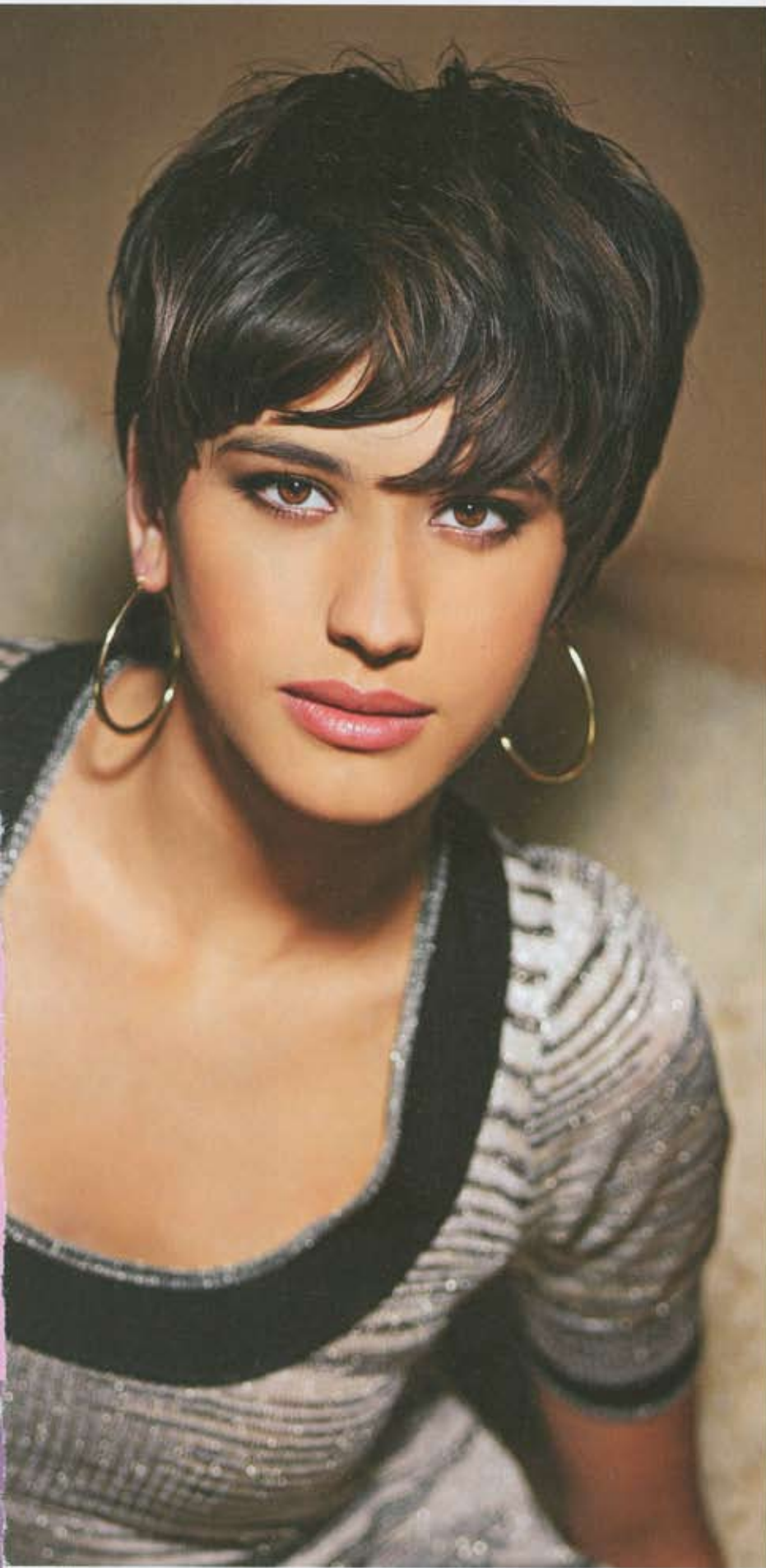
TAPERED OUT

Thick hair with tapered layers looks a lot fuller and softer, and easily takes on more movement. Here, the sides are spiraled around hot rollers. By alternating directions, you'll add extra volume.

TOP NOTCH

For an updo that stays, first set hair on Velcro® rollers. Once you unwind rollers, brush hair and wrap it right back up and pin in place. For long lengths, braid hair straight up the back.





ROUGH & RAZORED

A super-versatile look for long hair comes from slicing in razored layers all through the front, then adding a combination of lowlights and highlights to enhance the effect.



PRECISION LAYERS

When hair's cut in long layers through the top and angled ones at the sides, all you have to do is add a graduated nape. Now, styling's simple: Just comb hair down and style the fringe however you prefer. Here, mousse adds separation.

PRETTY PIN CURLS

Set the sides in pin curls and bring out your feminine side. To do, side-part hair and finger-curve ends forward, as you blow-dry. Add volume in back for a rounded shape—the subtle pieces of highlights will shine through.